

VISUAL APPROACH CHART - ICAO

ELEV AND ALT IN FEET

TA 7000

OBST LESS THAN 100 FT AGL NORMALLY NOT SHOWN

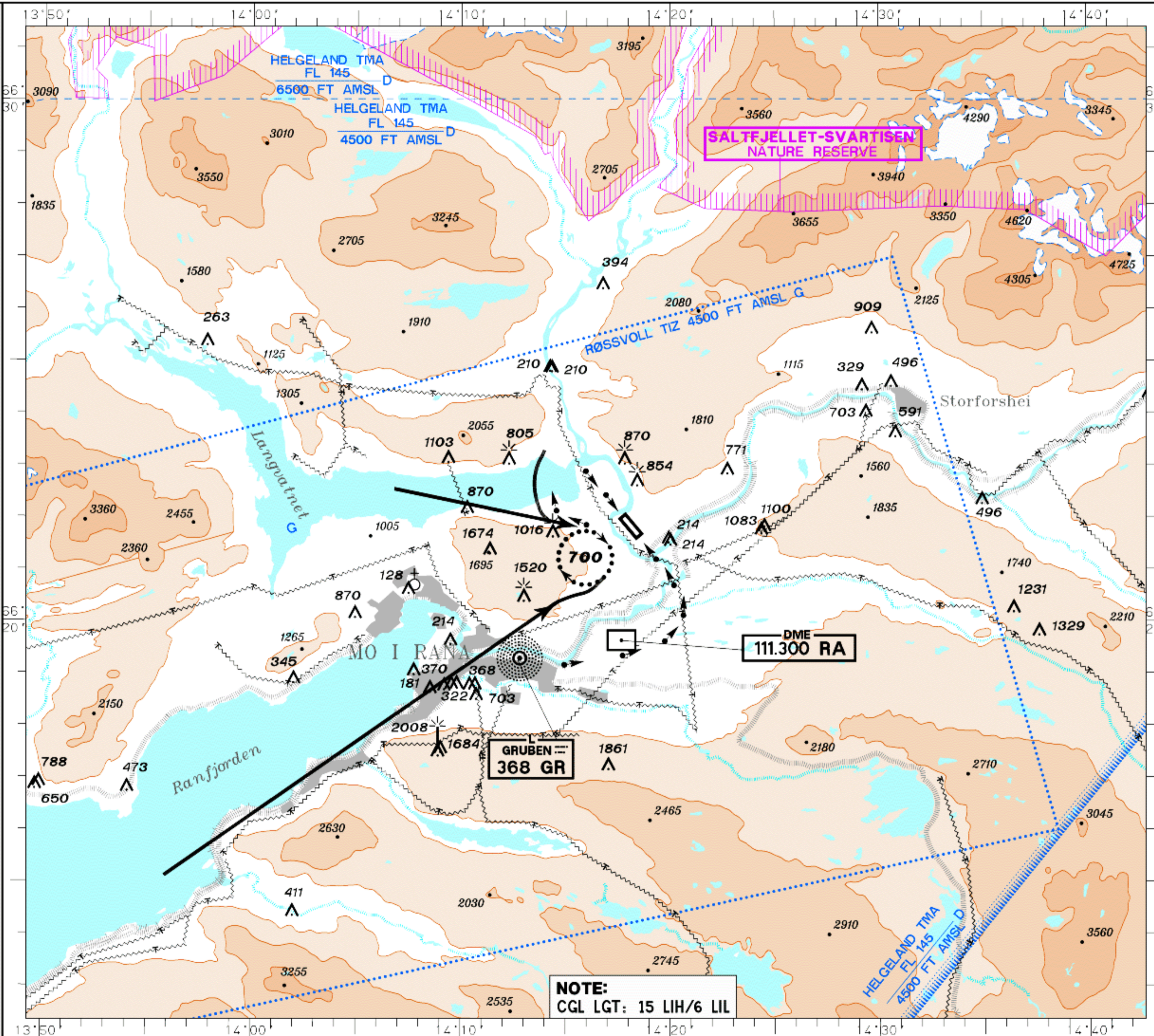
VAR 4° E (2005)

AFIS	APP
19,950	127,900
VDF	ATIS
19,950	124,750

MO I RANA RØSSVOLL NORWAY

NORWAY

SCALE 1:200000



NOTE:
CGL LGT: 15 LIH/6 LIL

AD ELEV 229 FT.

PLASI RWY 14: RIGHT SIDE, 4.5°, MEHT 26 FT.
LIMITED TO MAX 2 NM FM THR 14.
PLASI RWY 32: RIGHT SIDE, 4.5°, MEHT 26 FT.
LIMITED TO MAX 4 NM FM THR 32.

NOTE: INFORMATION PERTAINING TO VFR FLIGHT INCLUDED.

VFR RCF PROC:

1. SQUAWK 7600.
2. PROCEED VIA ROUTES SHOWN AND HOLD 1NM SOUTHWEST OF TWR, WEST OF RIVER AT 700 FT.
3. FLASH LDG-LIGHTS AND WATCH TWR FOR VISUAL SIGNALS.

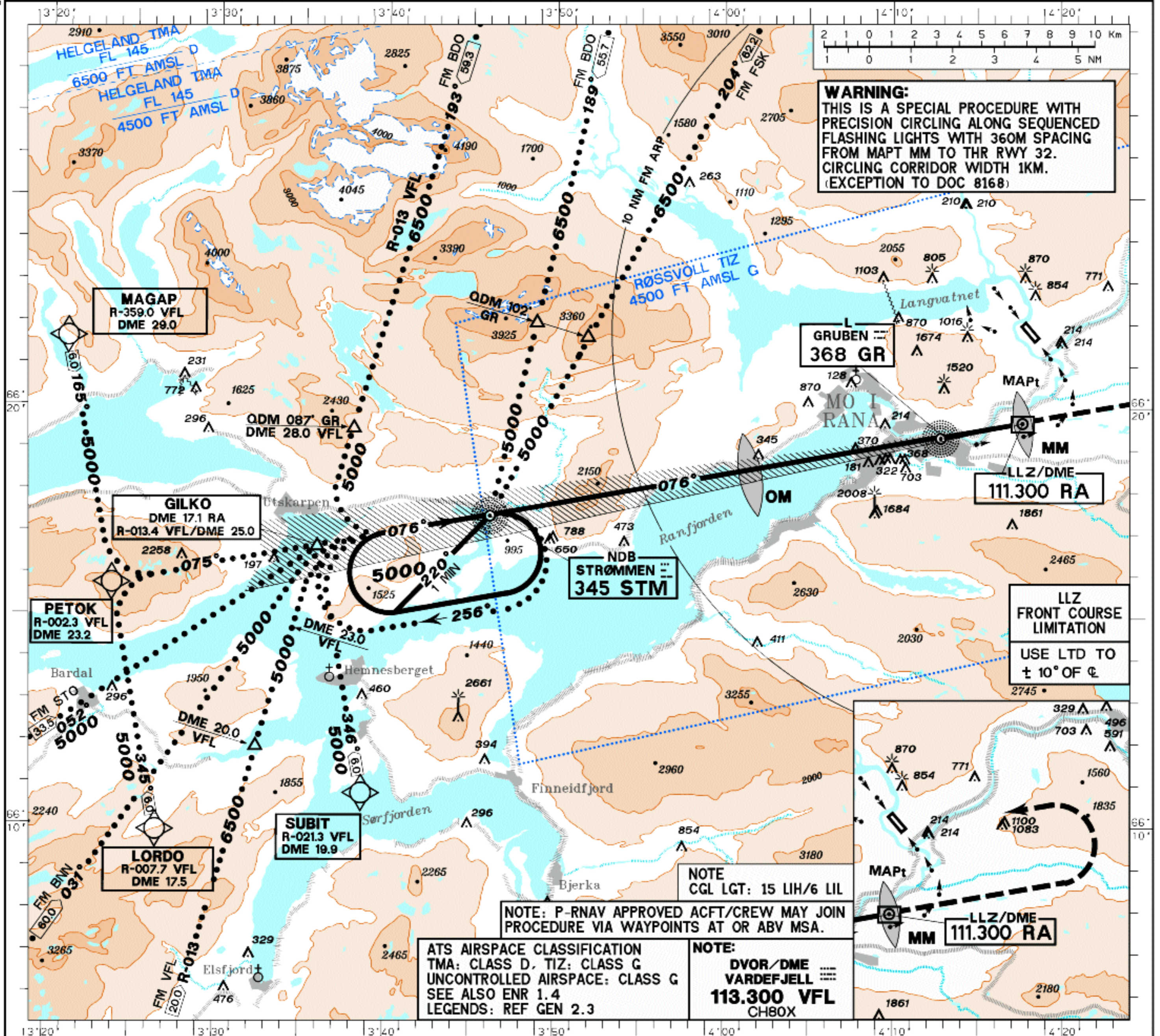
ATS AIRSPACE CLASSIFICATION
TMA: CLASS D
TIZ: CLASS G
UNCONTROLLED AIRSPACE, CLASS G
SEE ALSO ENR 1.4
LEGENDS: REF GEN 2.3



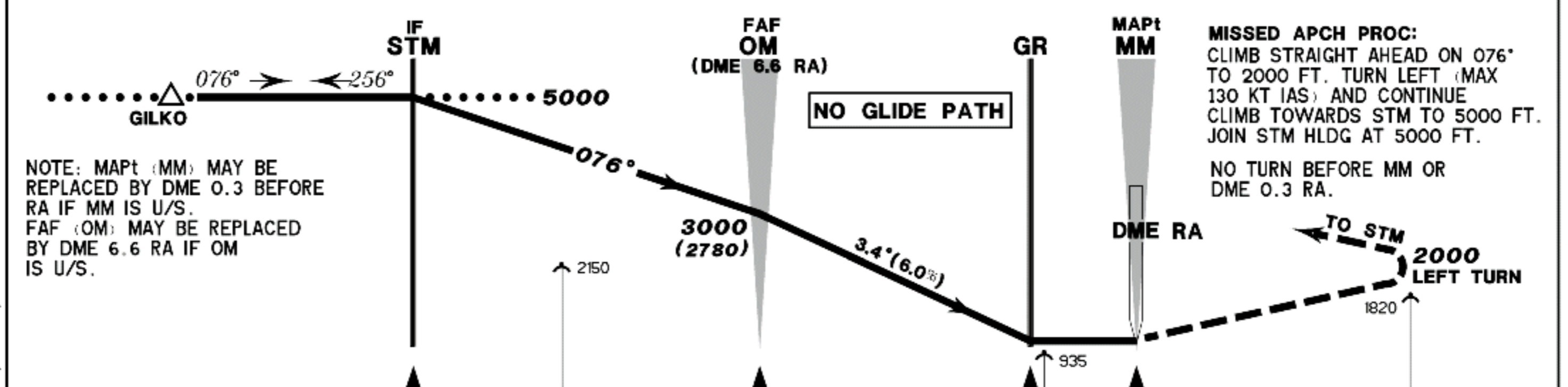
Avinor

13 APR 2006

INSTRUMENT APPROACH CHART-ICAO 1:275000		AD ELEV 229 FT. CIRCLING HGT RELATED TO AD ELEV. ALTITUDE, ELEVATION AND HGT IN FT. BEARINGS ARE MAG.	AFIS 119.950	APP 127.900	VDF 119.950	ATIS 124.750	MO I RANA RØSSVOLL NORWAY LLZ/DME+MKR-076° - STRØMMEN* (CAT A, B) APCH TO CIRCLING
			TA 7000	VAR 4° E (2005)			



* CAUTION: MISSED APCH PROC ENDS IN HLDG AT NDB STM (STRØMMEN)



CAT OF ACFT: A, B, C, D		FINAL APPROACH DISTANCE FM GR TO MM: 2.0 NM - TIMING NOT AUTHORIZED.					
OCA (H) STRAIGHT-IN			SPEED: 60	90	120	150	180
			TIME: 2:00	1:20	1:00	0:48	0:40
				RATE OF DESCENT: -			
				DIST DME: 5	4	3	2
				ALT (HGT): 2430 (2200)	2060 (1830)	1700 (1470)	1330 (1110)

NOTE: PRECISION CIRCLING ALONG SEQUENCED FLASHING LIGHTS.